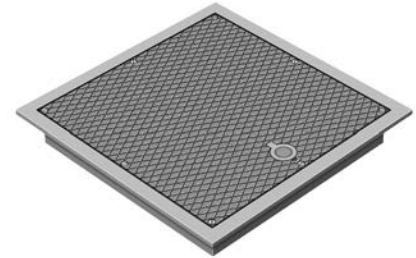
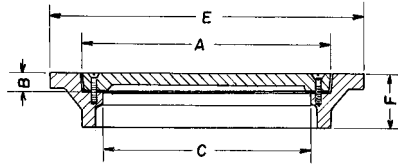
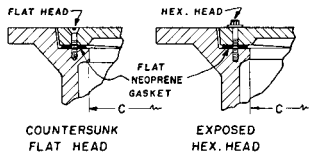
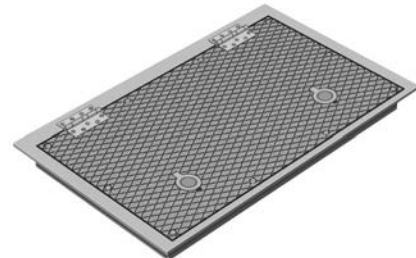


**R-6665-0 to R-6665-1 Series**  
**Manhole Frame, Bolted/Gasketed Lid**

**Light Duty**



*Illustrating R-6665-0NP*



*Illustrating R-6665-1KH*

Square and rectangular sizes in this series furnished standard with countersunk stainless steel flat head cap screws, flat neoprene gasket, Type G lift handle and, when so indicated, Type R stainless steel butt hinge.

All units available in cast aluminum or bronze for spark proof application.

Units are shipped assembled with gasket glued to frame.

**The specific location and number of hinges, handles and pickholes on these units may vary depending on the size and shape of the lids, and may not be exactly as illustrated. If the location and number of hinges, handles or pickholes is critical on your particular project, please specify requirements.**

Catalog No. Not Hinged	Catalog No. Steel Butt Hinge	Dimensions in inches					No. of Bolts
		A	B	C	E	F	
<b>Square</b>							
R-6665-0AP	R-6665-0AH	12 x 12	3/4	10 x 10	18 1/2 x 18 1/2	4	4
R-6665-0CP	R-6665-0CH	13 x 13	5/8	12 x 12	15 x 15	3	4
R-6665-0DP	R-6665-0DH	15 x 15	3/4	13 x 13	19 x 19	4	4
R-6665-0FP	R-6665-0FH	18 1/2 x 18 1/2	3/4	17 x 17	23 x 23	3	4
R-6665-0GP	R-6665-0GH	19 3/4 x 19 3/4	3/4	17 1/2 x 17 1/2	24 x 24	4	8
R-6665-0HP	R-6665-0HH	21 1/2 x 21 1/2	3/4	18 1/2 x 18 1/2	24 1/2 x 24 1/2	4	8
R-6665-0JP	R-6665-0JH	23 1/2 x 23 1/2	3/4	20 7/8 x 20 7/8	28 1/2 x 28 1/2	4	8
R-6665-0KP	R-6665-0KH	25 1/2 x 25 1/2	3/4	23 x 23	30 x 30	4	8
R-6665-0MP	R-6665-0MH	30 x 30	3/4	27 x 27	34 x 34	4	8
R-6665-0NP	R-6665-0NH	32 x 32	3/4	29 x 29	36 x 36	4	8
<b>Rectangular</b>							
R-6665-1A1P	R-6665-1A1H	14 x 19	3/4	11 x 16	18 1/4 x 23 3/8	4	4
R-6665-1BP	R-6665-1BH	14 x 26	3/4	11 x 23	18 x 30	4	6
R-6665-1CP	R-6665-1CH	18 x 32	3/4	15 x 29	20 x 34	4	6
R-6665-1DP	R-6665-1DH	19 5/8 x 49 5/8	3/4	17 x 47	22 x 52	4	12
R-6665-1EP	R-6665-1EH	21 1/2 x 24 1/2	3/4	19 x 22	26 x 29	6	8
R-6665-1F3P *	R-6665-1F3H *	24 1/2 x 55 1/2	3/4	19 x 29	30 x 62	4	12
R-6665-1FP	R-6665-1FH	22 x 32	3/4	22 x 54	26 x 36	5 1/4	10
R-6665-1HP	R-6665-1HH	26 x 32	3/4	23 x 29	30 x 36	4	8
R-6665-1JP	R-6665-1JH	26 x 38	3/4	23 x 35	30 x 42	4	10
R-6665-1KP	R-6665-1KH	26 x 44	3/4	22 x 40	30 x 48	4	10
R-6665-1LP	R-6665-1LH	25 1/2 x 49 1/2	3/4	23 x 47	30 x 54	4	12
R-6665-1NP	R-6665-1NH	25 1/2 x 61 1/2	3/4	23 x 59	31 x 67	6	12
R-6665-1PP	R-6665-1PH	29 x 32	3/4	26 x 29	34 x 37	4	8
R-6665-1TP	R-6665-1TH	31 5/8 x 37 5/8	3/4	29 x 35	37 x 43	4	12
R-6665-1UP	R-6665-1UH	32 x 43 3/4	3/4	29 x 41	37 x 47 1/2	4	12
R-6665-1V1P	R-6665-1V1H	31 5/8 x 73	3/4	29 x 71	36 x 78	4	18
R-6665-1VP	R-6665-1VH	32 x 50	3/4	29 x 47	36 x 54	4	14

\* Frame in sections bolted at corners.